

# LID ArcPad Application

for analyzing LID retrofit opportunities in  
Anacostia River CSO Outfall 006, Washington, DC

Developed by

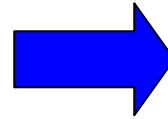
The Low Impact Development Center, Inc.

March 2004

# Starting the LIDtool application

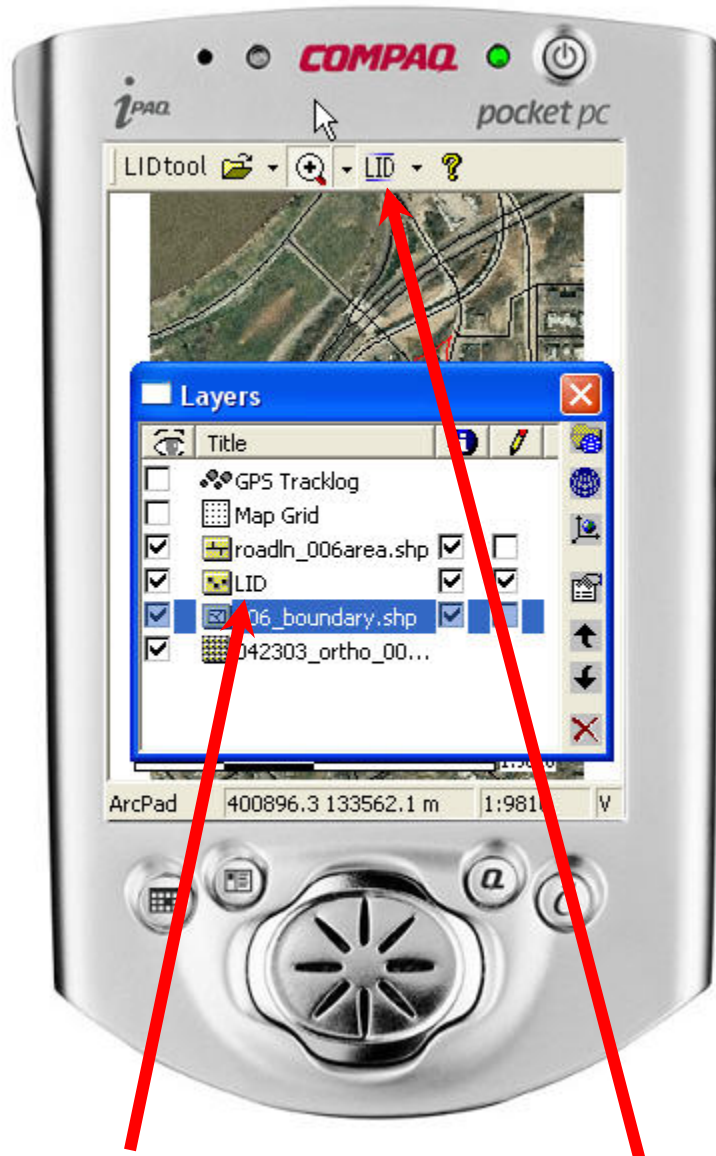


**Start ArcPad on iPAQ to automatically load LIDtool**

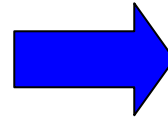


**Add LID shapefile and other Data Layers, or open ArcMap file**

# Working with the LID shapefile

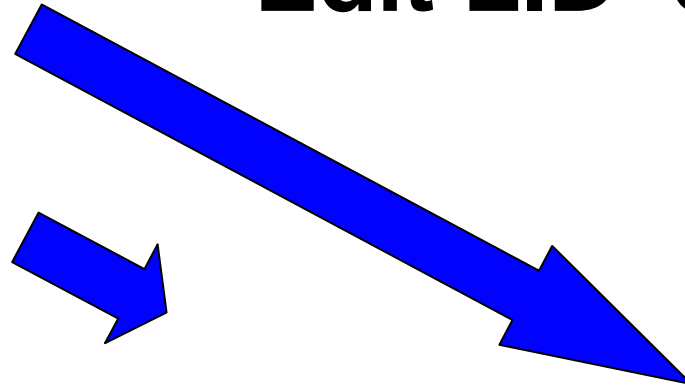
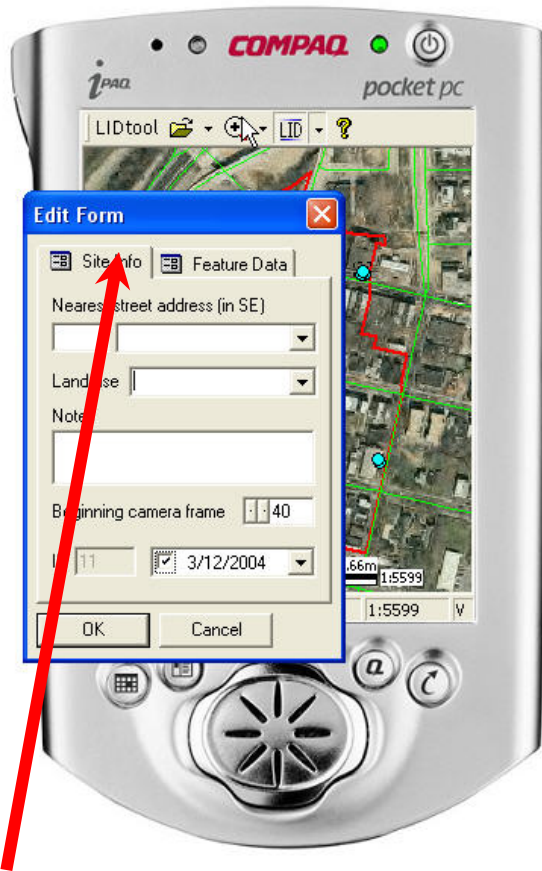


**Edit LID shapefile using the LID button**



**View with Data Layers open**

# Edit LID 'Site Info'



Site Info options are shown. Type in additional Street Names or Land Uses if necessary.

- To add a point, click
- the LID button, then
- the point of interest.

The Edit Form will open.

The Edit Form has two tabs:

- Site Info, and
- Feature Data.



# Edit LID 'Feature Data'

Feature Data options are shown.

Blue = water volume, Red = water quality



# Edit LID 'Feature Data' (cont'd)

Feature Data options are shown.

Blue = water volume, Red = water quality

